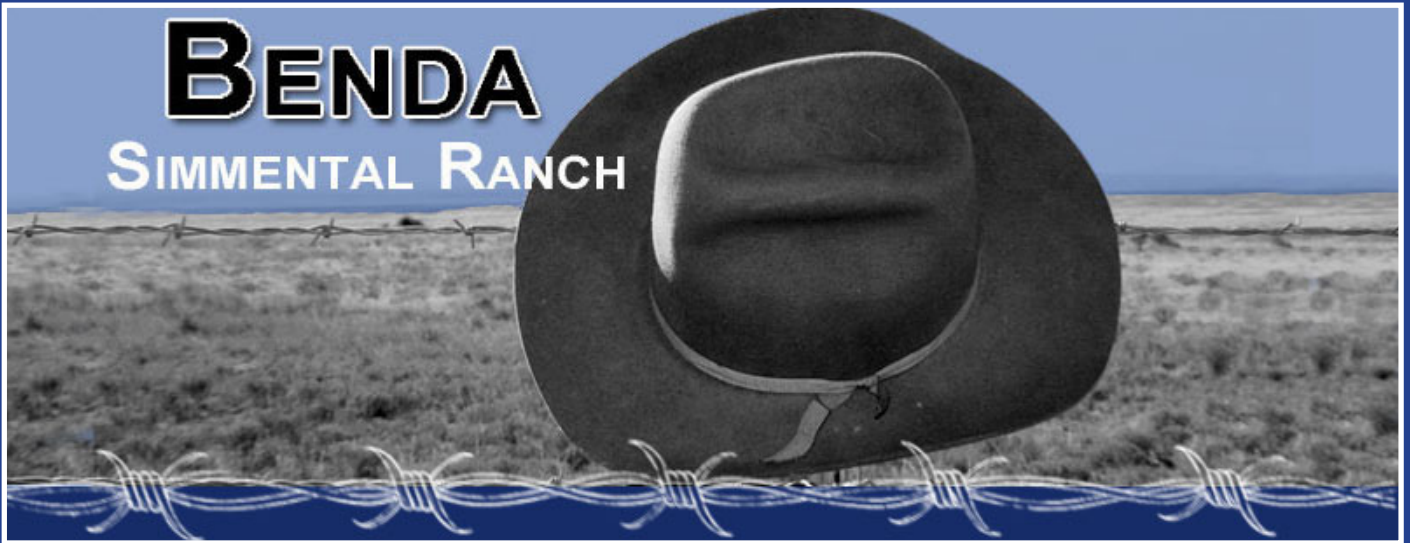


# BENDA

## SIMMENTAL RANCH



Lot 1

JBS Mr. Casino 011C



Lot 11

JBS Mr. Diamond 036 ET



Lot 34

JBS Mr. Octane 801C



Lot 48

JBS Mr. Cash 226C

*Benda Ranch*

**ANNUAL PRODUCTION SALE**  
**MONDAY, FEBRUARY 8, 2016 • 1 PM**

Selling an outstanding set of Simmental & SimAngus Bulls & Bred Heifers  
Sale will be held at Kimball Livestock Exchange in Kimball, SD.

*Benda Ranch*

Jim & Jay Benda  
26106 366th Ave. Kimball, SD 57355  
email: bendaranch@midstatesd.net

Home: 605-778-6703  
Jim Cell: 605-730-6703  
Jay Cell: 605-730-0215

**Our 41st Year**  
**Raising Simmentals**

**This sale will be broadcast live on the internet.**

***DVAuction***

***Broadcasting Real-Time Auctions***

**Real time bidding & proxy bidding available.**

**Watch and Bid Online  
dvauction.com**

*Videos will be available  
in late January*

# 🐾 B Benda Ranch 🐾

## Simmentals & Simmentals

### Annual Production Sale

Dear Cattlemen:

Being in the Simmental business for over 40 years has been fun, rewarding, profitable and a lot of work, but they say its not work if you enjoy what you do.

It's always been exciting to see the final product that we offer for sale each February. Our spring calving season was the best and easiest we had ever experienced. Mostly warm and dry weather got the calves off to a great start. Adequate rain for pastures came in May and throughout the summer.

The calves were weaned in late September and were fed a TMR of ground hay, silage, corn and distillers. They have been on a 48 meg/cal ration all fall and winter. Our weaning weights. were heavier this year and we aim for gains on a short test to be around 3.5 pounds. We don't want to burn out these bulls. Muddy lots were a bit of a problem but we put them out in a 40 acre pasture for about 6 weeks until the yards dried up or froze. By doing this they remained healthy and athletic.

We will have 56 black bulls and 2 top red bulls and 18 bred heifers. We guarantee the bulls through the 1st breeding season (90 days from turnout).

The heifers are all from our top end and are bred to our favorite calving ease bull (Brilliant Sky) from last years crop.

We will again winter the bulls free of charge until April 15 and semen test at no charge. If you would like to take your bulls home sale day we will take \$100 off the sale price.

If you can't make the sale you will be able to watch and bid at DVAuction this year.

Videos of all the cattle will be up at bendaranch.com and DVAuction site in late January. Thank you for your past patronage and we look forward to seeing you February 8.

## Benda Ranch Simmentals

Jim, Sue, Jay, Lauren & Ryan Benda  
26106 366th Ave. • Kimball, SD 57355  
Phone: (605) 778-6703

Cells: (605) 730-6703 (Jim) (605) 730-0215 (Jay)

email: bendaranch@midstatesd.net

www.bendaranch.com



*Jay, Lauren and Joey Braaten with Sarge, Ryan Benda  
Front row- Jim and Sue Benda, Peyton and Andrea Benda*

## Schedule:

Sunday, Feb. 7 Cattle on display  
Monday, Feb. 8 8:00 A.M. Cattle on display  
11:00 A.M. Complimentary Lunch  
1:00 P.M. Benda Ranch Sale

## Sale Staff:

Colton Buus, ASA Area Rep. .... 605-214-3532  
Curt Littau, FRE&TSLN ..... 605-879-2273  
Jeff Kapperman, The Neighbor ..... 605-940-5104  
Jim Scheel, Cattle Business Weekly ..... 605-545-1521  
Wayne Tupper, Kimball Livestock Auction..... 605-778-6211  
Eddie Houska, Kimball Livestock Auction .... 605-680-0666  
Dick Deffenbaugh, Kimball Livestock Auction ... 605-680-1324  
Justin Dikoff, DVAuction ..... 605-290-0635

## Auctioneer:

Justin Tupper ..... 605-680-0259

## Motel Accommodations:

Dakota Winds Motel .. 605-778-6215 or 1-888-751-1265  
Regency Inn & Suites..... 605-778-6088

## EPDs:

Please note these EPDs may change from the time the sale catalog is printed until registration papers are transferred.

## Announcements:

Announcements made sale day take precedence over printed material in the sale catalog. Anyone attending this sale attends at their own risk. Benda Ranch and sale force will not be held responsible for any personal injury while attending this sale.

## Terms of Sale:

Terms of sale are cash and the new owner is responsible for the bulls following the sale. Please let the sale clerks know if you plan on hauling your bull home sale day or if you want Jim to take them home to be wintered.

**Insurance forms will be available from Martin-Trudeau Insurance, Jared Mohnen, agent 605-682-1368.**

## Semen:

Benda Ranch retains 1/4 revenue sharing interest in semen sold from bulls in this sale.

## Health:

May Titanium 5 PHM/Pyramid 5 Presponse  
Vision 7 Somnus  
Sept Bovi Gold One Shot Combo  
Ultrabac 7 Somubac

Booster at weaning and poured with Cydectin. All bulls are free of genetic defects.

## Trucking:

Benda Ranch will assist buyers in making the most economical trucking possible.

## Wintering the Bulls:

Free wintering until April 15 and semen test or \$100 off if you take them sale day. However, we will not be responsible for injury or death to the bulls.

## Feeding & Test:

The bulls were raised with NO creep feed. They have been wintered on high roughage ration of corn silage, corn distillers, ground alfalfa-hay mix, corn and mineral supplement designed for developing bulls. Bulls were on a 88 day test for A.D.G.

## Directions to Sale Facility:

Sale facility is located on the northeast edge of Kimball, S.D.

## Lunch:

Catered by What's for Dinner, Jennifer Namanny and Jill Braun.

## Thank You:

Special thanks to Case Blom of Professional Alliance, Platte, SD for helping sponsor the lunch. See Case for your feed needs.

## Quick Reference to ASA EPDs and \$ Indexes

**Expected Progeny Differences (EPDs):** EPDs are the most accurate and effective tool available for comparing genetic levels. In using EPDs, the difference between two sires' EPDs represents the unit difference expected in the performance of their progeny. For example, if sires A and B have EPDs of +10 and -5, a 15-unit difference would be expected in their progeny (moving from -5 to +10 yields 15 units). Key to using EPDs is knowing what units they are expressed in. For example, if the above case referred to weaning weight EPDs, A would be expected to sire 15-pounds more *weaning weight* than B. If calving ease were the trait, A would be expected to sire 15-percent more *unassisted births* in first-calf heifers; in other words, if B sired 30 assists in a group of 100 heifers, we'd expect A to require 15 assists. A percentile-ranking chart is required to determine where a bull's EPDs rank him relative to other bulls in the breed. For percentile rankings or more detailed information about EPDs and \$ indexes visit [www.simmental.org](http://www.simmental.org). Listed below are the units ASA EPDs are expressed in:

**All-Purpose Index (API):** Dollars per cow exposed under an all-purpose-sire scenario. (See below for more details.)

**Back Fat (BF):** Inches of backfat.

**Birth Weight (BW):** Pounds of birth weight.

**Calving Ease (CE):** Percent of unassisted births when used on heifers.

**Carcass Weight (CW):** Pounds of carcass weight.

**Maternal Calving Ease (MCE):** Percent of unassisted births in first-calving daughters.

**Milk (MLK):** Pounds of weaning weight due to milk.

**Marbling (MRB):** Marbling score.

**Maternal Weaning Weight (MWW):** Pounds of weaning weight due to milk and growth.

**Ribeye Area (REA):** Square inches of ribeye.

**Warner-Bratzler Shear Force (WBSF):**

Pounds of force required to shear a steak.

**Stayability (STAY):** Percent of daughters remaining in the cowherd at 6 years of age.

**Terminal Index (TI):** Dollars per cow exposed under a terminal-sire scenario. (See below for more details.)

**Weaning Weight (WW):** Pounds of weaning weight.

**Yearling Weight (YW):** Pounds of yearling weight.

**Yield Grade (YG):** Yield grade score.

**\$ Indexes:** Though EPDs allow for the comparison of genetic levels for many economically important traits, they only provide a piece of the economic puzzle. That's where \$ indexes come in. Through well-conceived, rigorous mathematical computation, \$ indexes blend EPDs and economics to estimate an animal's overall impact on your bottom line. The same technology that led to the dramatic progress in swine, poultry and dairy genetics over the last several decades was used to develop the following \$ indexes:

**All-Purpose Index (API):** Evaluates sires for use on the entire cow herd (bred to both Angus first-calf heifers and mature cows) with the portion of their daughters required to maintain herd size retained and the remaining heifers and steers put on feed and sold grade and yield.

**Terminal Index (TI):** Evaluates sire for use on mature Angus cows with all offspring put on feed and sold grade and yield.

**Using API and TI:** First, determine which index to use; if you're keeping replacements use API, if not, TI. Then, just as with EPDs, zero in on the unit difference between bulls. (As described above, index units are in dollars per cow exposed.) The difference can be used to determine how much a bull is worth compared to another. Or, put another way, how much you can pay for one bull compared to another. For example, when buying an all-purpose-type sire, you can quickly figure a bull scoring +100 for API is worth an extra \$6,000 over a +50 bull if both are exposed to 30 cows over 4 years (\$50 diff. x 30 hd. x 4 yr. = \$6,000). A percentile-ranking chart is required to determine where a bull's index value ranks him relative to other bulls in the breed. For percentile rankings or more detailed information about EPDs and \$ indexes visit [www.simmental.org](http://www.simmental.org).

**2016 Avg. Purebred  
Simmental EPD's**

CE	BW	WW	YW	ADG
9.0	1.8	63.1	92.1	0.18
MCE	Milk	MWW	API	TI
9.4	21.7	53.3	120.8	67.4

**2016 Hybrid  
Simmental Avg. EPD's**

CE	BW	WW	YW	ADG
10.5	0.6	60.6	93.4	0.21
MCE	Milk	MWW	API	TI
7.7	22.0	52.3	121.5	68.3

# Benda Ranch Simm-Angus & Simmentals

## Annual Production Sale

**Selling:** 30 Powerful Simmental Yearling Bulls 28 Simm Angus Composites

18 Bred Heifers

**Monday, February 8, 2016 1:00 P.M.**

**Kimball Livestock Exchange Kimball, South Dakota**

**Sale Day Phone 605-778-6211**



## BENDA RANCH HERD REFERENCE SIREs



### JBS Big Casino

ASA# 2602861

Sire: RC Club King 040R

Dam: JBS Miss Des 301 512N  
(Desperado 301K)

EPD's: 11 -1 69 102 14 25 59

### CCR Cowboy Cut 5048Z

ASA# 2703910

Sire: Triple C Singletary S3H

Dam: CCR Ms 4045 (In Dew Time)

EPD's: 9 2 94 125 11 15 61

### KS Black Diamond W992

ASA# 2505594

Sire: Wheatland Bull 680S

Dam: KS Kayla J497 (Preferred Stock)

EPD's: 35 69 115 1 32 67

### Double J Straight Up Y132

ASA# 2595270

Sire: Mr. NLC Upgrade U8676

Dam: Double J Miss K056 (Wally)

EPD's: 10 0 54 70 13 24 51

### Hart Final Answer 0038

AAA# 16760844

Sire: SAV Final Answer 0035

Dam: Hart Mariah 8407

(Hart Precision)

EPD's: 17 -1 70 108 11 23 57

### SAV Bismarck 5682

AAA# 15109865

Sire: GAR Grid Maker

Dam: SAV Abigale 0451

EPD's: 19 -3 66 110 14 27 60

### Mr. HOC Broker

ASA# 2531081

Sire: SVF Steel Force S701

Dam: JM BF H25 (G&L Blackfoot)

EPD's: -2 5 72 107 8 8 44

### TNT Tanker U263

ASA# 2470581

Sire: Mr. NLC Superior S6018

Dam: TNT Miss S17

EPD's: 2 3 82 129 20 26 67

### Welsh's Dew It Right 067T

ASA# 2403649

Sire: HTP SVF In Dew Time

Dam: SVF/NJC Senerita N29

EPD's: 16 1 66 83 5 17 50

### Gibbs 0689X Crimson Tide

ASA# 2602503

Sire: Mr. NLC Upgrade U8676

Dam: SSF Blk Lucy S727

EPD's: 6 2 76 125 9 26 64

### Wheatland High Octane 169Y

ASA# 2632510

Sire: Wheatland Predator 922W

Dam: Wheatland Lady 351N

EPD's: 2 2 62 94 3 21 52

### JBS Arapahoe - Gold 519P

ASA# 2244299

Sire: SS Goldmine L42

Dam: JBS Miss Arapahoe 519

EPD's: 10 -1 49 59 12 35 60

### Barstow Cash

AAA# 17145326

Sire: Sitz Dash 10277

Dam: Barstow Queen W16

(Final Answer)

EPD's: 19 -3 84 156 14 10 52

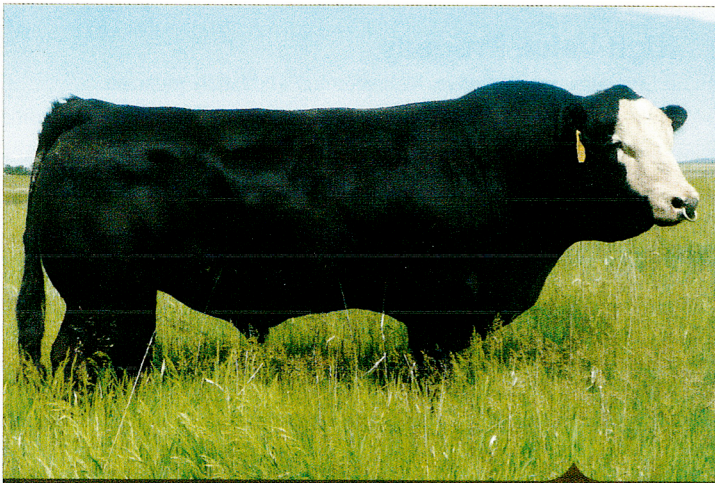
### SAV Brilliance 8077

AAA# 16107774

Sire: SAV Bismarck 5682

Dam: SAV Blackcap May (Traveler 004)

EPD's: 20 -3 57 102 7 30 58



## 29SM0451 **BIG CASINO**

JBS BIG CASINO 336Y ASA 2602861 Born 3/11/11

Owned by: Benda Simmentals, SD; ABS Global, Inc., WI

HC HUMMER 12M JBS MR DESPERADO 301K  
 RC CLUB KING 040R JBS MISS DES 301 512N  
 RC MISS GRIFFEY 038N JBS MISS 600U 512

TRAIT	CE	BW	WW	YW	ADG	MCE	MILK	MWW	STAY	DOC	CW	YG	MARB	BF	REA	SHR	\$API	\$TI
<b>EPD</b>	+11.7	-1.0	+76.4	+115.8	+.25	+13.4	+20.5	+58.7	+15.3	+12.9	+37.1	-.42	-.07	-.085	+.96	-.20	\$115	\$75
<b>ACC</b>	.58	.80	.76	.70	.70	.38	.39	.48	.35	.41	.53	.40	.51	.45	.45	.37		

DNA tested DDF, Homozygous Black, Homozygous Polled

SPRING 2016 **TOP 35%**

## A Good Bet for Added Performance

- ✓ Blaze faced bull who is loaded with length, muscle and power
- ✓ A true multi-dimensional bull who ranks in the top 10% of the breed for 8 different traits and indexes and in the top 20% for 13 traits and indexes
- ✓ BIG CASINO is a unique find, not just for phenotype, but is currently the only purebred bull in the breed to rank in the top 10% of the breed for BW, WW, YW, ADG, MCE, YG and TI Index
- ✓ Progeny are lauded as being stout, big hipped cattle with most having a good splash of white on their face
- ✓ DNA tested homozygous black, homozygous polled, PB SM

CALVING EASE ★★★

CARCASS MERIT 🍖🍖



## JBS Mr. Casino 011C

BD: 3-17-15 Black, Polled, Purebred Reg. #3029734  
 Act. BW: 103 lbs. Adj. 205 Wt: 871 WW Ratio: 123  
 1/5/16 Wt: 1170 lbs. 88 Day ADG: 3.5 SC: 37

RC Club King 040R  
 JBS Big Casino 336Y  
 JBS Miss Des 301 512N  
 GW Lucky Man 644N  
 JBS Miss Lucky 744X  
 JBS Miss Ambush 315T

EPDs	CE	BW	WW	YW	MCE	MM	MWW	API	TI
	9.3	2.2	84.6	127.2	13.1	22.6	64.9	115.2	81.3

Dam: 4 calves/114 WWR  
 Our #1 ww bull this year. Ranked #1/108 bull calves with a 123 ww ratio, the same ratio as his sire JBS Big Casino. The top weaning weight bull we have raised in 40+ years of testing. Meat, muscle and length, this guy covers all the bases. He will add pounds to your calf crop. Homozygous black and homozygous polled.



Lot 1



## JBS Mr. Casino 836C

BD: 3-25-15 Black, Polled, 5/8 Simm Reg. #3029803  
 Act. BW: 97 lbs. Adj. 205 Wt: 764 WW Ratio: 108  
 1/5/16 Wt: 1060 lbs. 88 Day ADG: 3.5 SC: 37

RC Club King 040R  
 JBS Big Casino 336Y  
 JBS Miss Des 301 512N  
 Mytty In Focus  
 JBS Miss Focus 340U  
 JBS Miss Bando 952N

EPDs	CE	BW	WW	YW	MCE	MM	MWW	API	TI
	11.0	0.7	76.4	118.2	11.9	18.7	56.9	135.0	77.1

Dam: 6 calves/94 WWR  
 Fancy Blaze face that ranked in top 25% for WW.



Lot 2

**3**

## JBS Mr. Casino 060C

BD: 3-25-15 Black, Polled, Purebred Reg. #3029774  
 Act. BW: 81 lbs. Adj. 205 Wt: 770 WW Ratio: 109  
 1/5/16 Wt: 1050 lbs. 88 Day ADG: 3.7 SC: 36

RC Club King 040R  
 JBS Big Casino 336Y  
 JBS Miss Des 301 512N  
 ASR/GLS Pacesetter U862  
 JBS Miss Pace 409X  
 JBS Miss Surge 009P

EPDs	CE	BW	WW	YW	MCE	MM	MWW	API	TI
13.4	-2.1	65.1	98.3	14.0	23.3	55.9	135.0	73.2	

Dam: 4 calves/102 WWR  
 Really attractive blaze face purebred. He has a bw ratio of 113 and 109 for ww. That's about as good as it gets. Hetero black, homo polled.

**4**

## JBS Mr. Casino 054C

BD: 4-11-15 Black, Polled, Purebred Reg. #3029732  
 Act. BW: 93 lbs. Adj. 205 Wt: 829 WW Ratio: 117  
 1/5/16 Wt: 1050 lbs. 88 Day ADG: 3.4 SC: 34

RC Club King 040R  
 JBS Big Casino 336Y  
 JBS Miss Des 301 512N  
 SVF/NJC Built Right N48  
 JBS Miss Builtright 747X  
 JBS Miss Ambush 307T

EPDs	CE	BW	WW	YW	MCE	MM	MWW	API	TI
11.0	0.8	71.0	103.5	11.1	17.2	52.7	116.8	73.7	

Dam: 4 calves/101 WWR  
 I really like this Casino bull. Stood out in the pasture all summer. Ranked #7/108 at weaning. Maternal sister is one of my favorite heifers we will calf this spring. Homo black, Homo polled.

**5**

## JBS Mr. Casino 010C

BD: 3-25-15 Black, Polled, Purebred Reg. #3029740  
 Act. BW: 87 lbs. Adj. 205 Wt: 759 WW Ratio: 107  
 1/5/16 Wt: 1010 lbs. 88 Day ADG: 3.2 SC: 34

RC Club King 040R  
 JBS Big Casino 336Y  
 JBS Miss Des 301 512N  
 Hooks Shear Force 38K  
 JBS Miss Force 708X  
 JBS Miss LD008 031T

EPDs	CE	BW	WW	YW	MCE	MM	MWW	API	TI
13.2	-0.4	71.9	106.4	13.9	27.8	63.8	138.3	77.5	

Dam: 4 calves/107 WWR  
 Casino calf with ratios of 107 for both calving and weaning. Dam raised the \$9000 top selling red bull last year to Clay Ekstrum. Hetero black, homo black.

**6**

## JBS Mr. Casino 118C

BD: 3-7-15 Black, Polled, Purebred Reg. #3029662  
 Act. BW: 88 lbs. Adj. 205 Wt: 748 WW Ratio: 106  
 1/5/16 Wt: 1090 lbs. 88 Day ADG: 3.6 SC: 38

RC Club King 040R  
 JBS Big Casino 336Y  
 JBS Miss Des 301 512N  
 Ellingson Legacy M229  
 JBS Miss Olie 710Y  
 JBS Miss G. Design 943T

EPDs	CE	BW	WW	YW	MCE	MM	MWW	API	TI
12.3	-0.1	70.1	104.2	12.6	23.7	58.7	119.0	76.3	

Dam: 3 calves/103 WWR  
 Another Casino calf with ratios of 106 for both birth and weaning. I think I'm seeing a trend here with these Casino calves.

**7**

## JBS Mr. Casino 119C

BD: 3-31-15 Black, Polled, Purebred Reg. #3029710  
 Act. BW: 93 lbs. Adj. 205 Wt: 702 WW Ratio: 99  
 1/5/16 Wt: 975 lbs. 88 Day ADG: 3.8 SC: 33

RC Club King 040R  
 JBS Big Casino 336Y  
 JBS Miss Des 301 512N  
 ASR/GLS Pacesetter U862  
 JBS Miss Pace 839Y  
 JBS Miss Ranch Hand 009U

EPDs	CE	BW	WW	YW	MCE	MM	MWW	API	TI
10.9	-0.1	57.2	88.2	13.6	28.0	56.6	124.3	67.4	

Dam: 3 calves/107 WWR  
 From a nice PaceSetter Daughter that has a good calving ease pedigree. Maternal sister was one of our top 1st calf heifers last year.

**8**

## JBS Mr. Casino 334C

BD: 3-26-15 Black, Polled, 3/4 Simm Reg. #3029692  
 Act. BW: 94 lbs. Adj. 205 Wt: 715 WW Ratio: 101  
 1/5/16 Wt: 1010 lbs. 88 Day ADG: 4.3 SC: 33

RC Club King 040R  
 JBS Big Casino 336Y  
 JBS Miss Des 301 512N  
 SAF Fame  
 JBS Miss Fame 402N  
 JBS Miss IBK 402

EPDs	CE	BW	WW	YW	MCE	MM	MWW	API	TI
10.4	-0.4	62.7	92.5	14.2	19.4	50.8	127.7	65.7	

Dam: 9 calves/99 WWR  
 From a 12 year old cow that has never missed.





## JBS Mr. Casino 904C

BD: 3-28-15 Black, Polled, Purebred Reg. #3029634  
 Act. BW: 99 lbs. Adj. 205 Wt: 762 WW Ratio: 108  
 1/5/16 Wt: 1070 lbs. 88 Day ADG: 4.0 SC: 34

RC Club King 040R  
 JBS Big Casino 336Y  
 JBS Miss Des 301 512N  
 WS Independence T18  
 JBS Miss Indy 510W  
 JBS Miss Crossfire 704R

EPDs	CE	BW	WW	YW	MCE	MM	MWW	API	TI
10.0	1.9	76.0	112.8	12.1	19.2	57.2	129.7	73.7	

Dam: 5 calves/100 WWR  
 The Casino calves grow. Strong cow family. Weaning in the top 30% of all our bull calves.



## JBS Mr. Casino 115C

BD: 4-6-15 Black, Polled, 3/4 Simm Reg. #3029717  
 Act. BW: 102 lbs. Adj. 205 Wt: 776 WW Ratio: 110  
 1/5/16 Wt: 1025 lbs. 88 Day ADG: 3.6 SC: 37

RC Club King 040R  
 JBS Big Casino 336Y  
 JBS Miss Des 301 512N  
 SAV Bismarck 307Y  
 JBS Miss Bismarck 568Z  
 JBS Miss MT 117N

EPDs	CE	BW	WW	YW	MCE	MM	MWW	API	TI
10.3	1.7	74.2	110.9	11.5	22.9	60.0	126.1	72.0	

Dam: 3 calves/107 WWR  
 Top performer and weaning in this young Casino bull. Ranked in the top 20% at weaning.



## JBS Mr. Diamond 036C

BD: 2-19-15 Black, Polled, Purebred Reg. #3029711  
 Act. BW: 108 lbs. Adj. 205 Wt: 886 WW Ratio: N/C  
 1/5/16 Wt: 1280 lbs. 88 Day ADG: 3.5 SC: 37

Wheatland Bull 680S  
 KS Black Diamond W992  
 KS Kayla J497  
 JBS Mr. Desperado 301K  
 JBS Miss Des 301 512N  
 JBS Miss 600U 512

EPDs	CE	BW	WW	YW	MCE	MM	MWW	API	TI
4.5	3.5	66.4	105.0	6.7	31.7	64.9	101.6	61.3	

ET calf by Blk Diamond and out of Big Casino's dam. The heaviest calf we have ever weaned with actual weight of 975 on Oct. 8. Solid made structurally correct power bull. The perfect blaze face makes him a real eye catcher. He will be one of the elite power bulls to sell this winter. Homo black, polled.



## JBS Mr. Diamond 104C

BD: 2-20-15 Black, Polled, Purebred Reg. #3029655  
 Act. BW: 98 lbs. Adj. 205 Wt: 697 WW Ratio: N/C  
 1/5/16 Wt: 1220 lbs. 88 Day ADG: 5.2 SC: 37

Wheatland Bull 680S  
 KS Black Diamond W992  
 KS Kayla J497  
 JBS Mr. Desperado 301K  
 JBS Miss Des 301 512N  
 JBS Miss 600U 512

EPDs	CE	BW	WW	YW	MCE	MM	MWW	API	TI
4.5	3.5	66.4	105.0	6.7	31.7	64.9	101.6	61.3	

ET brother to Lot 11. Solid black calf that has almost caught up to his full brother. His recip cow didn't milk quite as well but he has made up for that. Homo black, polled. The top gaining bull on the 88 day test.



## JBS Mr. Broker 928C

BD: 2-17-15 Black, Polled, Purebred Reg. #3029624  
 Act. BW: 104 lbs. Adj. 205 Wt: 720 WW Ratio: N/C  
 1/5/16 Wt: 1035 lbs. 88 Day ADG: 2.9 SC: 39

SVF Steel Force S701  
 Mr Hoc Broker  
 JM BF H25  
 SS Goldmine L42  
 Double J Miss S657  
 Double J Miss P422

EPDs	CE	BW	WW	YW	MCE	MM	MWW	API	TI
3.5	2.7	58.1	77.2	8.2	10.9	40.0	100.1	57.2	

ET Broker calf from Double J's Goldmine cow that has done such a great job for them. Purchased as embryos in our State Sale. Eye appeal and thick made. Broker calves have been topping many sales. Homo black, Homo polled.



**14**

## JBS Mr. Broker 938C

BD: 2-20-15 Black, Polled, Purebred Reg. #3029771  
 Act. BW: 98 lbs. Adj. 205 Wt: 695 WW Ratio: N/C  
 1/5/16 Wt: 1055 lbs. 88 Day ADG: 3.3 SC: 37

SVF Steel Force S701  
 Mr Hoc Broker  
 JM BF H25  
 SS Goldmine L42  
 Double J Miss S657  
 Double J Miss P422

EPDs	CE	BW	WW	YW	MCE	MM	MWW	API	TI
3.5	2.7	58.1	77.2	8.2	10.9	40.0	100.1	57.2	

ET full brother to 928C (Lot 13) made so much alike its hard to tell them apart. Homo black, Homo polled.

**15**

## JBS Mr. Tanker 012C

BD: 3-14-15 Black, Polled, Purebred Reg. #3029762  
 Act. BW: 105 lbs. Adj. 205 Wt: 817 WW Ratio:115  
 1/5/16 Wt: 1135 lbs. 88 Day ADG: 3.6 SC: 36

Mr NLC Superior S6018  
 TNT Tanker U263  
 TNT Miss S17  
 ASR/GLS Pacesetter U862  
 JBS Miss Pace 512X  
 JBS Miss P Beef 532R

EPDs	CE	BW	WW	YW	MCE	MM	MWW	API	TI
6.1	2.0	77.8	120.7	15.1	21.8	60.7	125.2	75.0	

Dam: 3 calves/110 WWR

Tanker continues to be one of the most consistent producers of top cut bull and females. 012 is one of the best Tankers we have raised. Made the top 10 list for weaning at #9. Homo black, Homo polled.

**16**

## JBS Mr. Tanker 057C

BD: 3-02-15 Black, Polled, 3/4 Simm Reg. #3029766  
 Act. BW: 91 lbs. Adj. 205 Wt: 810 WW Ratio:114  
 1/5/16 Wt: 1175 lbs. 88 Day ADG: 3.6 SC: 38

Mr NLC Superior S6018  
 TNT Tanker U263  
 TNT Miss S17  
 Varilek Bushwhacker 4135  
 JBS Miss Bushwacker 531X  
 JBS Miss 908 149R

EPDs	CE	BW	WW	YW	MCE	MM	MWW	API	TI
5.2	1.4	72.2	114.1	13.5	22.3	58.4	105.9	66.1	

Dam: 4 calves/103 WWR

Big time weaning and moderate BW. That's the combination we all look for.

**17**

## JBS Mr. Tanker 926C

BD: 3-13-15 Black, Polled, Purebred Reg. #3029776  
 Act. BW: 102 lbs. Adj. 205 Wt: 729 WW Ratio:103  
 1/5/16 Wt: 1090 lbs. 88 Day ADG: 4.0 SC: 34

Mr NLC Superior S6018  
 TNT Tanker U263  
 TNT Miss S17  
 Remington Red Label HR  
 JBS Miss Red Label 035W  
 JBS Miss Headstart 421K

EPDs	CE	BW	WW	YW	MCE	MM	MWW	API	TI
4.5	3.3	69.7	104.3	14.4	25.4	60.2	102.9	64.8	

Dam: 4 calves/105 WWR

Nice Tanker that is loaded with muscle. Full brother was a top seller in last years sale at \$6,750.

**18**

## JBS Mr. Tanker 821C

BD: 3-18-15 Black, Polled, 3/4 Simm Reg. #3029791  
 Act. BW: 96 lbs. Adj. 205 Wt: 747 WW Ratio: 105  
 1/5/16 Wt: 1120 lbs. 88 Day ADG: 3.9 SC: 36

Mr NLC Superior S6018  
 TNT Tanker U263  
 TNT Miss S17  
 OCC Magnitude 805M  
 JBS Miss Magnitude 652U  
 JBS Miss Dakota 814S

EPDs	CE	BW	WW	YW	MCE	MM	MWW	API	TI
5.4	2.3	77.0	120.8	11.9	18.5	57.0	103.8	67.4	

Dam: 6 calves/98 WWR

Moderate framed Tanker from a smaller framed Magnitude 1/2 blood cow.



**19****JBS Mr. Tanker 909C - TW**

BD: 3-11-15 Black, Polled, Purebred Reg. #3029796  
 Act. BW: 90 lbs. Adj. 205 Wt: 616 WW Ratio:  
 1/5/16 Wt: 960 lbs. 88 Day ADG: 3.6 SC: 35

Mr NLC Superior S6018  
 TNT Tanker U263  
 TNT Miss S17  
 WS Independence T18  
 JBS Miss Indy 334W  
 JBS Miss Fame 402N

EPDs	CE	BW	WW	YW	MCE	MM	MWW	API	TI
7.4	1.6	68.1	103.8	16.7	16.3	50.3	107.4	67.7	

Lot 19 and Lot 20 are twin bulls from a top Indy cow. She raised both for a while until we found a foster cow for Lot 20. Both have really come on strong since weaning.

**20****JBS Mr. Tanker 920C - TW**

BD: 3-11-15 Black, Polled, Purebred Reg. #3029814  
 Act. BW: 73 lbs. Adj. 205 Wt: 592 WW Ratio:  
 1/5/16 Wt: 930 lbs. 88 Day ADG: 3.5 SC: 35

Mr NLC Superior S6018  
 TNT Tanker U263  
 TNT Miss S17  
 WS Independence T18  
 JBS Miss Indy 334W  
 JBS Miss Fame 402N

EPDs	CE	BW	WW	YW	MCE	MM	MWW	API	TI
7.4	1.6	68.1	103.8	16.7	16.3	50.3	107.4	67.7	

Lot 19 and Lot 20 are twin bulls from a top Indy cow. She raised both for a while until we found a foster cow for Lot 20. Both have really come on strong since weaning.

**21****JBS Mr. Tanker 617C**

BD: 3-19-15 Black, Polled, 5/8 Simm Reg. #3029760  
 Act. BW: 96 lbs. Adj. 205 Wt: 713 WW Ratio: 101  
 1/5/16 Wt: 1085 lbs. 88 Day ADG: 4.6 SC: 35

Mr NLC Superior S6018  
 TNT Tanker U263  
 TNT Miss S17  
 BV&M RD Ambush 472  
 JBS Miss Ambush 027S  
 JBS Miss TC Stock 622K

EPDs	CE	BW	WW	YW	MCE	MM	MWW	API	TI
6.8	1.8	60.7	95.9	14.3	23.0	53.4	117.7	65.6	

Dam: 6 calves/98 WWR

Typical Tanker, deep bodied and good growth. One of the top gainers after weaning,

**22****JBS Mr. Cowboy Cut 021C**

BD: 3-30-15 Black, Polled, Purebred Reg. #3029770  
 Act. BW: 101 lbs. Adj. 205 Wt: 834 WW Ratio: 118  
 1/5/16 Wt: 1125 lbs. 88 Day ADG: 3.9 SC: 36

Triple C Singletary S3H  
 CCR Cowboy Cut 5048Z  
 CCR MS 4045 Time 7322T  
 ASR GLS Pacesetter U862  
 JBS Miss Pace 340X  
 JBS Miss Bando 952N

EPDs	CE	BW	WW	YW	MCE	MM	MWW	API	TI
9.0	2.2	81.8	118.8	10.6	16.9	57.8	143.7	87.0	

Dam: 4 calves/102 WWR

Tremendous performance in this son of the popular Cowboy Cut who is destined to be one of the most used Simmental bulls of all time. This bull will add length and pounds. His Pace Setter dam is one of our best. You will see him as the maternal grandsire to many of our top bulls. Hetero black, homo polled

**23****JBS Mr. Cowboy Cut 718C**

BD: 3-16-15 Black, Polled, Purebred Reg. #3029727  
 Act. BW: 91 lbs. Adj. 205 Wt: 738 WW Ratio: 104  
 1/5/16 Wt: 1055 lbs. 88 Day ADG: 3.5 SC: 38

Triple C Singletary S3H  
 CCR Cowboy Cut 5048Z  
 CCR MS 4045 Time 7322T  
 GW Lucky Man 644N  
 JBS Miss Lucky 413T  
 JBS Miss MT437P

EPDs	CE	BW	WW	YW	MCE	MM	MWW	API	TI
10.8	0.4	65.8	94.1	10.7	26.3	59.2	149.4	80.4	

Dam: 7 calves/110 WWR

Fancy son of Cowboy Cut. Dam is one of the most consistent producers of top end calves we own. Soft, smooth made calf with eye catching style. Definitely one of the top PB herd bull prospects. He blends it all together as well as any. Homo black, homo polled.



**24**

## JBS Mr. Cowboy Cut 640C

BD: 3-19-15 Black, Polled, Purebred Reg. #3029690  
 Act. BW: 93 lbs. Adj. 205 Wt: 710 WW Ratio: 100  
 1/5/16 Wt: 980 lbs. 88 Day ADG: 3.3 SC: 34

Triple C Singletary S3H  
 CCR Cowboy Cut 5048Z  
 CCR MS 4045 Time 7322T  
 ES Dakota NK68  
 JBS Miss Dakota 86S  
 Hooks Smooth Velvet 38G

EPDs	CE	BW	WW	YW	MCE	MM	MWW	API	TI
9.1	1.6	68.2	98.0	11.1	21.5	55.6	141.2	77.0	

Dam: 8 calves/101 WWR

Purebred Cowboy Cut from one of my favorite cows. Total package with a royal pedigree.

**Lot 24****25**

## JBS Mr. Cowboy Cut 950C

BD: 4-5-15 Black, Polled, 3/4 Simm Reg. #3029616  
 Act. BW: 101 lbs. Adj. 205 Wt: 838 WW Ratio: 118  
 1/5/16 Wt: 1060 lbs. 88 Day ADG: 3.0 SC: 37

Triple C Singletary S3H  
 CCR Cowboy Cut 5048Z  
 CCR MS 4045 Time 7322T  
 B/R New Frontier 095  
 JBS Miss Frontier 644W  
 JBS Miss Dakota 919S

EPDs	CE	BW	WW	YW	MCE	MM	MWW	API	TI
8.4	2.3	80.2	120.4	11.2	17.7	57.8	146.2	85.5	

Dam: 5 calves/101 WWR

Big time early growth in this 3/4 blood Cowboy Cut. His dam makes them fancy and they grow.

**26**

## JBS Mr. Cowboy Cut 819C

BD: 3-13-15 Black, Polled, 3/4 Simm Reg. #3029757  
 Act. BW: 95 lbs. Adj. 205 Wt: 771 WW Ratio: 109  
 1/5/16 Wt: 1100 lbs. 88 Day ADG: 3.2 SC: 40

Triple C Singletary S3H  
 CCR Cowboy Cut 5048Z  
 CCR MS 4045 Time 7322T  
 Bushs Grand Design  
 JBS Miss G Design 836U  
 JBS Miss Arapahoe 836

EPDs	CE	BW	WW	YW	MCE	MM	MWW	API	TI
10.3	1.3	76.2	104.8	11.0	21.3	59.4	147.3	82.1	

Dam: 6 calves/103 WWR

3/4 blood Cowboy Cut from one of our best Grand Design cows and Arapahoe granddam.

**27**

## JBS Mr. Cowboy Cut 235C

BD: 3-26-15 Black, Polled, Purebred Reg. #3029673  
 Act. BW: 93 lbs. Adj. 205 Wt: 619 WW Ratio: 87  
 1/5/16 Wt: 1025 lbs. 88 Day ADG: 3.5 SC: 38

Triple C Singletary S3H  
 CCR Cowboy Cut 5048Z  
 CCR MS 4045 Time 7322T  
 ASR/GLS Pacesetter U862  
 JBS Miss Pace 601Z  
 JBS Miss G Design 425S

EPDs	CE	BW	WW	YW	MCE	MM	MWW	API	TI
11.1	0.5	62.0	87.9	11.3	18.1	49.1	144.4	79.1	

Dam: 2 calves/86 WWR

Smaller made Cowboy Cut that has really excelled since weaning.

**28**

## JBS Mr. Dew It Right 331C

BD: 2-20-15 Black, Polled, Purebred Reg. #3029653  
 Act. BW: 95 lbs. Adj. 205 Wt: 750 WW Ratio: 106  
 1/5/16 Wt: 1080 lbs. 88 Day ADG: 3.8 SC: 35

HTP SVF In Dew Time  
 Welshs Dew It Right 067T  
 SVF/ NJC Senerita N29  
 Hooks Shear Force 38K  
 JBS Miss Force 120A  
 JBS Miss Bismarck 806Y

EPDs	CE	BW	WW	YW	MCE	MM	MWW	API	TI
16.9	0.2	78.1	107.3	11.6	20.5	59.6	148.1	84.3	

Dam: 1 calf/106 WWR

Dew It Right is the AI sire we use on our heifers. They calve easy and have very good early growth. Eye catching phenotype.

**Lot 28****29**

## JBS Mr. Dew It Right 326C

BD: 2-18-15 Black, Polled, 5/8 Simm Reg. #3029789  
 Act. BW: 96 lbs. Adj. 205 Wt: 661 WW Ratio: 93  
 1/5/16 Wt: 1030 lbs. 88 Day ADG: 4.0 SC: 37

HTP SVF In Dew Time  
 Welshs Dew It Right 067T  
 SVF/ NJC Senerita N29  
 SAV Bismarck 5682  
 JBS Miss Bismarck 601A  
 JBS Miss G Design 425S

EPDs	CE	BW	WW	YW	MCE	MM	MWW	API	TI
14.1	1.1	73.2	102.6	10.4	16.1	52.7	143.2	75.8	

Dam: 1 calf/93 WWR

From a first calf heifer. One of the really nice DIR bulls. Not the biggest bull but well balanced and fancy

**30**

## JBS Mr. Dew It Right 325C

BD: 2-17-15 Black, Polled, Purebred Reg. #3029783  
 Act. BW: 82 lbs. Adj. 205 Wt: 629 WW Ratio: 89  
 1/5/16 Wt: 940 lbs. 88 Day ADG: 3.8 SC: 32

HTP SVF In Dew Time  
 Welshs Dew It Right 067T  
 SVF/ NJC Senerita N29  
 ASR/GLS Pacesetter U862  
 JBS Miss Pace 821A  
 JBS Miss Magnitude 652U

EPDs	CE	BW	WW	YW	MCE	MM	MWW	API	TI
15.1	-1.0	60.4	85.4	9.4	18.4	48.6	127.9	70.5	

Dam: 1 calf/89 WWR

From a 1st calf heifer. A real calving ease bull with eye appeal.

**31**

## JBS Mr. Dew It Right 327C

BD: 2-19-15 Black, Polled, Purebred Reg. #3029784  
 Act. BW: 98 lbs. Adj. 205 Wt: 649 WW Ratio: 92  
 1/5/16 Wt: 930 lbs. 88 Day ADG: 3.2 SC: 32

HTP SVF In Dew Time  
 Welshs Dew It Right 067T  
 SVF/ NJC Senerita N29  
 Double J Straight Up Y132  
 JBS Miss Straight Up 410A  
 JBS Miss Ambush 317P

EPDs	CE	BW	WW	YW	MCE	MM	MWW	API	TI
12.5	1.1	61.2	80.7	9.7	19.5	50.1	118.4	68.8	

Dam: 1 calf/92 WWR

From a 1st calf heifer. We use Dew It Right on most of our heifers and the calves came easy.

**32**

## JBS Mr. Dew It Right 236C

BD: 3-20-15 Black, Polled, 5/8 Simm Reg. #3029697  
 Act. BW: 95 lbs. Adj. 205 Wt: 660 WW Ratio: 93  
 1/5/16 Wt: 920 lbs. 88 Day ADG: 3.4 SC: 34

HTP SVF In Dew Time  
 Welshs Dew It Right 067T  
 SVF/ NJC Senerita N29  
 Hart Final Answer  
 JBS Miss HF Answer 607Z  
 JBS Miss G Design 142S

EPDs	CE	BW	WW	YW	MCE	MM	MWW	API	TI
15.1	0.0	58.7	80.6	11.5	23.6	53.0	144.7	69.2	

Dam: 2 calves/96 WWR

Typical DIR that just does everything right. Full brother sold to Barry Emmons last year for \$5,000. The DIR are making excellent females that are easy keeping good milkers.

**33**

## JBS Mr. Dew It Right 213C

BD: 3-20-15 Black, Polled, 3/4 Simm Reg. #3029706  
 Act. BW: 97 lbs. Adj. 205 Wt: 701 WW Ratio: 99  
 1/5/16 Wt: 990 lbs. 88 Day ADG: 3.5 SC: 33

HTP SVF In Dew Time  
 Welshs Dew It Right 067T  
 SVF/ NJC Senerita N29  
 S Chisum 6175  
 JBS Miss Chisum 901Z  
 JBS Miss Indy 144W

EPDs	CE	BW	WW	YW	MCE	MM	MWW	API	TI
12.5	1.7	68.3	100.0	10.7	22.1	56.3	129.3	68.4	

Dam: 2 calves/99 WWR

Dew It Right son that comes from an impressive Chisum female. Full brother sold in last years sale to Emmons for \$6,000.

**34**

## JBS Mr. Octane 801C

BD: 3-24-15 Black, Polled, 3/4 Simm Reg. #3029778  
 Act. BW: 102 lbs. Adj. 205 Wt: 772 WW Ratio: 109  
 1/5/16 Wt: 1160 lbs. 88 Day ADG: 4.5 SC: 35

Wheatland Predator 922W  
 Wheatland Highoctane 169Y  
 Wheatland Lady 351N  
 Bush's Grand Design  
 JBS Miss G Design 350U  
 JBS Miss Desperado 713N

EPDs	CE	BW	WW	YW	MCE	MM	MWW	API	TI
4.4	3.0	73.6	109.2	6.0	17.8	54.6	97.3	67.2	

Dam: 6 calves/101 WWR

Top performance in the Octane son. Depth of body and smooth soft made. These Octanes have a perfect hair coat, as baby calves they really stick out. Should really make some fancy feeder calves. Homo black, Homo polled.

**Lot 34****35**

## JBS Mr. Octane 931C

BD: 3-14-15 Black, Polled, Purebred Reg. #3029652  
 Act. BW: 107 lbs. Adj. 205 Wt: 707 WW Ratio: 100  
 1/5/16 Wt: 1090 lbs. 88 Day ADG: 4.1 SC: 37

Wheatland Predator 922W  
 Wheatland Highoctane 169Y  
 Wheatland Lady 351N  
 Hooks Shear Force 38K  
 JBS Miss Force 710W  
 JBS Miss G. Design 943T

EPDs	CE	BW	WW	YW	MCE	MM	MWW	API	TI
5.8	3.4	64.4	95.0	6.7	23.4	55.6	108.0	66.5	

Dam: 5 calves/99 WWR

Octane PB that has really packed in on since weaning and is moving to the top. This bull has proven himself to be in the top cut. Homo black, Homo polled.

**Lot 35**

**36****JBS Mr. Octane 013C**

BD: 3-13-15 Black, Polled, Purebred Reg. #3029772  
 Act. BW: 96 lbs. Adj. 205 Wt: 671 WW Ratio: 95  
 1/5/16 Wt: 990 lbs. 88 Day ADG: 3.6 SC: 34

Wheatland Predator 922W  
 Wheatland Highoctane 169Y  
 Wheatland Lady 351N  
 ASR/GLS Pacesetter U862  
 JBS Miss Pace 349X  
 JBS Miss Daytona 949N

EPDs	CE	BW	WW	YW	MCE	MM	MWW	API	TI
5.7	1.2	54.2	84.7	5.2	24.2	51.3	110.0	58.3	

Dam: 4 calves/101 WWR

Moderate framed Octane son with syle, balance and strong EPD's. Dam is a smaller framed Pace Setter that is impressive.

**37****JBS Mr. Octane 828C**

BD: 3-20-15 Black, Polled, 3/4 Simm Reg. #3029750  
 Act. BW: 95 lbs. Adj. 205 Wt: 789 WW Ratio: 111  
 1/5/16 Wt: 1150 lbs. 88 Day ADG: 3.9 SC: 36

Wheatland Predator 922W  
 Wheatland Highoctane 169Y  
 Wheatland Lady 351N  
 HSAF Bando 1961  
 JBS Miss Bando 630U  
 JBS Miss Venom 446S

EPDs	CE	BW	WW	YW	MCE	MM	MWW	API	TI
4.7	1.4	65.7	101.6	4.5	22.3	55.1	92.6	62.9	

Dam: 6 calves/103 WWR

Really fancy 3/4 blood that comes from a Bando 1961 cow that consistently brings in a good one.

**38****JBS Mr. Octane 412C**

BD: 3-24-15 Black, Polled, Purebred Reg. #3029729  
 Act. BW: 92 lbs. Adj. 205 Wt: 731 WW Ratio: 103  
 1/5/16 Wt: 975 lbs. 88 Day ADG: 3.2 SC: 38

Wheatland Predator 922W  
 Wheatland Highoctane 169Y  
 Wheatland Lady 351N  
 SAC Mr Mt 73G  
 JBS Miss Mt 828P  
 JBS Miss 600U 828

EPDs	CE	BW	WW	YW	MCE	MM	MWW	API	TI
6.4	0.9	57.2	83.1	2.5	20.5	49.1	107.2	61.1	

Dam: 10 calves/97 WWR

Smaller framed PB that is backed by an elite pedigree.

**39****JBS Mr. Straightup 114C**

BD: 3-17-15 Black, Polled, 3/4 Simm Reg. #3029707  
 Act. BW: 103 lbs. Adj. 205 Wt: 813 WW Ratio: 115  
 1/5/16 Wt: 1130 lbs. 88 Day ADG: 3.5 SC: 38

Mr NLC Upgrade U8676  
 Double J Straightup Y132  
 Double J Miss K056  
 SAV Bismarck 5682  
 JBS Miss Bismarck 640Y  
 JBS Miss Dakota 86S

EPDs	CE	BW	WW	YW	MCE	MM	MWW	API	TI
10.4	1.5	72.3	104.3	12.3	19.1	55.2	133.9	73.9	

Dam: 3 calves/102 WWR

Oh my this guy really has passed all the tests. Massive deep thick quartered bull that has gained the attention of several visitors. He has never stopped putting on the lbs. He will be in the front pen.

**40****JBS Mr. Straightup 112C**

BD: 3-16-15 Black, Polled, Purebred Reg. #3029703  
 Act. BW: 102 lbs. Adj. 205 Wt: 781 WW Ratio: 110  
 1/5/16 Wt: 1100 lbs. 88 Day ADG: 3.8 SC: 36

Mr NLC Upgrade U8676  
 Double J Straightup Y132  
 Double J Miss K056  
 RC Club King 040R  
 JBS Miss Club King 409Y  
 JBS Miss Surge 009P

EPDs	CE	BW	WW	YW	MCE	MM	MWW	API	TI
9.7	1.6	64.5	90.7	12.3	22.0	54.3	117.8	70.5	

Dam: 3 calves/105 WWR

Upgrade grandson that really pushes down the scale. Sire was the top seller in Double J's 2012 sale. Dam is a beautiful daughter of Club King that is rising to the top in our cow herd.

**41****JBS Mr. Straightup 001C**

BD: 3-19-15 Black, Polled, Purebred Reg. #3029748  
 Act. BW: 95 lbs. Adj. 205 Wt: 701 WW Ratio: 99  
 1/5/16 Wt: 950 lbs. 88 Day ADG: 3.0 SC: 32

Mr NLC Upgrade U8676  
 Double J Straightup Y132  
 Double J Miss K056  
 WS Independence T18  
 JBS Miss Indy 636X  
 JBS Miss P Beef 149S

EPDs	CE	BW	WW	YW	MCE	MM	MWW	API	TI
11.0	0.8	58.0	80.7	13.1	20.8	49.8	133.7	67.3	

Dam: 4 calves/96 WWR

Pretty as a picture blaze face grandson of Upgrade. Well balance moderate framed PB.

**42****JBS Mr. Crimson Tide 601C**

BD: 3-17-15 Black, Polled, 3/4 Simm Reg. #3029617  
 Act. BW: 102 lbs. Adj. 205 Wt: 839 WW Ratio: 118  
 1/5/16 Wt: 1160 lbs. 88 Day ADG: 3.4 SC: 40

Mr NLC Upgrade U8676  
 Gibbs 0689X Cimson Tide  
 SSF Blk Lucy S727  
 Bushs Grand Design  
 JBS Miss G Design 425S  
 JBS Miss Desperado 916P

EPDs	CE	BW	WW	YW	MCE	MM	MWW	API	TI
7.2	3.2	86.2	128.5	8.8	13.4	56.5	131.4	83.6	

Dam: 8 calves/101 WWR

Crimson Tide son that I think wins the honor of being the longest bodied bull in this years sale. Plenty of muscle and meat in a performance bull. Dam was a class winning heifer at the SD State Fair. Homo black, Homo polled.

**Lot 42****44****JBS Mr. Arapa Gold 320C**

BD: 2-16-15 Red, Polled, Purebred Reg. #3029638  
 Act. BW: 88 lbs. Adj. 205 Wt: 796 WW Ratio: 112  
 1/5/16 Wt: 1085 lbs. 88 Day ADG: 3.2 SC: 37

SS Goldmine L42  
 JBS Arapahoe-Gold 519P  
 JBS Miss Arapahoe 519  
 ASR/GLS Pacesetter U862  
 JBS Miss Pace 812A  
 JBS Miss Dream On 418U

EPDs	CE	BW	WW	YW	MCE	MM	MWW	API	TI
11.4	-0.2	65.7	90.6	12.3	27.1	60.0	134.7	72.1	

Dam: 1 calf/112 WWR

Our other red bull that is much like Lot 43. Both are very nice red PB bulls. Non-diluter.

**Lot 44****43****JBS Mr. Arapa Gold 321C**

BD: 2-17-15 Red, Polled, Purebred Reg. #3029631  
 Act. BW: 91 lbs. Adj. 205 Wt: 785 WW Ratio: 111  
 1/5/16 Wt: 1095 lbs. 88 Day ADG: 3.3 SC: 36

SS Goldmine L42  
 JBS Arapahoe-Gold 519P  
 JBS Miss Arapahoe 519  
 Hooks Shear Force 38K  
 JBS Miss Force 710A  
 JBS Miss G Design 943T

EPDs	CE	BW	WW	YW	MCE	MM	MWW	API	TI
11.6	0.7	70.5	92.9	12.3	29.1	64.4	131.6	76.7	

Dam: 1 calf/111 WWR

Only 2 red bulls in this years sale. Both are outcross on sire side by the Arapaho Gold bull who topped our sale 10 years ago. They are calving ease bulls that weaned heavy. These 2 bulls balance growth and maternal traits near the top. Non-diluter. Homo polled

**Lot 43****45****JBS Mr. Brilliance 313C**

BD: 2-11-15 Black, Polled, 1/2 Simm Reg. #3029780  
 Act. BW: 99 lbs. Adj. 205 Wt: 774 WW Ratio: 109  
 1/5/16 Wt: 1120 lbs. 88 Day ADG: 3.4 SC: 38

SAV Bismarck 5682  
 SAV Brilliance 8077  
 SAV Blackcap May 5270  
 RC Club King 040R  
 JBS Miss Club King 636A  
 JBS Miss P Beef 149S

EPDs	CE	BW	WW	YW	MCE	MM	MWW	API	TI
12.8	0.8	75.1	120.0	10.3	24.9	62.4	141.3	79.3	

Dam: 1 calf/109 WWR

A top Brilliance half-blood that excels. Whether in the pasture or bull yard this bull will make you do a double take. From a really powerful Club King 1st calf heifer. Homo black, Homo polled.

**Lot 45**

46

### JBS Mr. Brilliance 307C

BD: 2-09-15 Black, Polled, 1/2 Simm Reg. #3029614  
Act. BW: 87 lbs. Adj. 205 Wt: 694 WW Ratio: 98  
1/5/16 Wt: 1060 lbs. 88 Day ADG: 3.6 SC: 38

SAV Bismarck 5682  
SAV Brilliance 8077  
SAV Blackcap May 5270  
Welshs Dew It Right 067T  
JBS Ms Dew It Right 122A  
JBS Miss Ranch Hand 927Y

EPDs	CE	BW	WW	YW	MCE	MM	MWW	API	TI
16.9	-1.5	66.0	101.8	10.0	23.9	56.9	145.5	75.4	

Dam: 1 calf/98 WWR

Really like the eye appeal this 1/2 blood gives you. Top calving ease with 3 generations of low birth wt.



48

### JBS Mr. Cash 226C

BD: 3-10-15 Black, Polled, 3/8 Simm Reg. #3029667  
Act. BW: 82 lbs. Adj. 205 Wt: 782 WW Ratio: 110  
1/5/16 Wt: 1140 lbs. 88 Day ADG: 4.0 SC: 38

Sitz Dash 10277  
Barstow Cash  
Barstow Queen W16  
ASR/GLS Pacesetter U862  
JBS Miss Pace 842Z  
JBS Miss Bushwacker 218U

EPDs	CE	BW	WW	YW	MCE	MM	MWW	API	TI
15.7	-1.5	74.9	130.0	11.8	24.3	61.8	146.1	81.2	

Dam: 2 calves/105 WWR

We think this % bull will be easy to find sale day. Son of Barstow Cash who set the Angus world on fire last year. Thick, deep and full of red meat. Homo black.



47

### JBS Mr. Brilliance 221C

BD: 3-21-15 Black, Polled, 1/2 Simm Reg. #3029670  
Act. BW: 92 lbs. Adj. 205 Wt: 739 WW Ratio: 104  
1/5/16 Wt: 1110 lbs. 88 Day ADG: 4.7 SC: 38

SAV Bismarck 5682  
SAV Brilliance 8077  
SAV Blackcap May 5270  
Ellingson Legacy M229  
JBS Miss Olie 932Z  
JBS Miss Ranchhand 717W

EPDs	CE	BW	WW	YW	MCE	MM	MWW	API	TI
15.4	0.1	65.6	106.6	10.2	26.7	59.5	147.9	76.1	

Dam: 2 calves/107 WWR

Nice 1/2 blood with good calving ease and above average WW.



49

### JBS Mr. Cash 316C

BD: 2-13-15 Black, Polled, 1/2 Simm Reg. #3029809  
Act. BW: 86 lbs. Adj. 205 Wt: 712 WW Ratio: 101  
1/5/16 Wt: 1135 lbs. 88 Day ADG: 4.6 SC: 39

Sitz Dash 10277  
Barstow Cash  
Barstow Queen W16  
KS Blackdiamond W992  
JBS Miss Diamond 815A  
JBS Miss Hustler 043U

EPDs	CE	BW	WW	YW	MCE	MM	MWW	API	TI
13.9	-0.5	80.8	134.7	10.2	25.3	65.7	137.5	80.4	

Dam: 1 calf/101 WWR

This Cash son is loaded with style and from a really attractive Blk Diamond 1st calf heifer. Should be excellent calving ease and make top cut females.





50

### JBS Mr. Cash 310C

BD: 2-10-15 Black, Polled, 1/2 Simm Reg. #3029810  
Act. BW: 86 lbs. Adj. 205 Wt: 714 WW Ratio: 101  
1/5/16 Wt: 1070 lbs. 88 Day ADG: 3.6 SC: 36

Sitz Dash 10277  
Barstow Cash  
Barstow Queen W16  
SVF/NJC MO Better M217  
JBS Miss Mo Better 013A  
JBS Miss Pace 349X

EPDs	CE	BW	WW	YW	MCE	MM	MWW	API	TI
14.0	-1.3	79.7	138.0	10.3	21.7	61.5	144.6	83.0	

Dam: 1 calf/101 WWR

Another Cash son that is very much like the previous lot. Again from a 1st calf smaller framed Mo Better heifer. There may not be many more Cash offspring as he was injured and not producing much semen. Homo black, Homo polled.



51

### JBS Mr. Bismarck 204C

BD: 3-5-15 Black, Polled, 1/2 Simm Reg. #3029688  
Act. BW: 91 lbs. Adj. 205 Wt: 724 WW Ratio: 102  
1/5/16 Wt: 1130 lbs. 88 Day ADG: 4.4 SC: 37

GAR Grid Maker  
SAV Bismarck 5682  
SAV Abigale 0451  
Nochols Manifest T79  
JBS Miss Manifest 011Z  
JBS Miss Lucky 744X

EPDs	CE	BW	WW	YW	MCE	MM	MWW	API	TI
15.4	-0.4	69.3	112.1	13.3	26.9	61.6	158.7	81.1	

Dam: 2 calves/111 WWR

Outstanding 1/2 blood Sim-Angus bull. One of the longest bodied bulls in this years offering with the depth and muscle to go along with it.



52

### JBS Mr. Bismarck 323C

BD: 2-17-15 Black, Polled, 1/4 Simm Reg. #3029807  
Act. BW: 98 lbs. Adj. 205 Wt: 761 WW Ratio: 107  
1/5/16 Wt: 1120 lbs. 88 Day ADG: 3.6 SC: 38

GAR Grid Maker  
SAV Bismarck 5682  
SAV Abigale 0451  
Mohnen Long Distance 1639  
JBS Miss L Distance 805A  
JBS Miss Ranch Hand 943U

EPDs	CE	BW	WW	YW	MCE	MM	MWW	API	TI
18.3	-0.7	74.8	117.6	14.1	22.3	59.7	168.8	86.2	

Dam: 1 calf/107 WWR

Bismarck has done an excellent job for us producing Simm-Angus bulls and females. Long deep bodied bull with well above average WW.

53

### JBS Mr. HF Answer 802C

BD: 4-8-15 Black, Polled, 1/2 Simm Reg. #3029637  
Act. BW: 93 lbs. Adj. 205 Wt: 860 WW Ratio: 121  
1/5/16 Wt: 1105 lbs. 88 Day ADG: 3.4 SC: 38

SAV Final Answer 0035  
Hart Final Answer  
Hart Mariah 8407  
JBS Mr. L Dice 008M  
JBS Miss LD 008 718U  
JBS Miss Granite 718

EPDs	CE	BW	WW	YW	MCE	MM	MWW	API	TI
11.5	2.1	79.5	120.4	14.1	25.1	64.8	139.6	77.9	

Dam: 6 calves/113 WWR

This 1/2 blood really blew the doors off at weaning time (#2 of 108). This bull will also put milk back into your herd.



**54****JBS Mr. HF Answer 037C**

BD: 3-30-15 Black, Polled, 3/8 Simm Reg. #3029719  
 Act. BW: 94 lbs. Adj. 205 Wt: 748 WW Ratio: 106  
 1/5/16 Wt: 1065 lbs. 88 Day ADG: 4.0 SC: 37

SAV Final Answer 0035  
 Hart Final Answer  
 Hart Mariah 8407  
 Ellingson Legacy M229  
 JBS Miss Olie 823X  
 JBS Miss Focus 236U

EPDs	CE	BW	WW	YW	MCE	MM	MWW	API	TI
14.6	1.1	71.1	109.6	12.5	18.1	53.7	152.2	80.1	

Dam: 4 calves/102 WWR

Another attractive low percentage bull. Dam produced a high seller in last years sale. Good calving ease bull.

**56****JBS Mr. HF Answer 48C**

BD: 4-18-15 Black, Polled, 1/2 Simm Reg. #3029619  
 Act. BW: 86 lbs. Adj. 205 Wt: 823 WW Ratio: 116  
 1/5/16 Wt: 1055 lbs. 88 Day ADG: 4.2 SC: 34

SAV Final Answer 0035  
 Hart Final Answer  
 Hart Mariah 8407  
 CCR Tribute 4078X  
 MS NLC Tribute Z2118  
 MS NLC Titan W9065

EPDs	CE	BW	WW	YW	MCE	MM	MWW	API	TI
12.0	0.0	76.1	111.7	9.0	16.5	54.6	138.7	80.8	

Dam: 1 calf/116 WWR

This young calf has really amazed me with his top end WW (8 of 108) and combined with his calving ease you can't miss.

**57****JBS Mr. HF Answer 913C**

BD: 4-09-15 Black, Polled, 3/8 Simm Reg. #3029630  
 Act. BW: 99 lbs. Adj. 205 Wt: 800 WW Ratio: 113  
 1/5/16 Wt: 1065 lbs. 88 Day ADG: 3.8 SC: 33

SAV Final Answer 0035  
 Hart Final Answer  
 Hart Mariah 8407  
 WS Independence T18  
 JBS Miss Indy 616W  
 JBS Miss LTD 225S

EPDs	CE	BW	WW	YW	MCE	MM	MWW	API	TI
13.4	1.7	70.9	109.0	13.1	22.8	58.2	143.4	76.5	

Dam: 5 calves/107 WWR

The Hart Final Answers never miss. He was definitely the best Angus bull we have owned. Take advantage because this is his last calf crop.

**55****JBS Mr. HF Answer 007C**

BD: 3-30-15 Black, Polled, 3/8 Simm Reg. #3029728  
 Act. BW: 92 lbs. Adj. 205 Wt: 728 WW Ratio: 103  
 1/5/16 Wt: 1000 lbs. 88 Day ADG: 3.5 SC: 37

SAV Final Answer 0035  
 Hart Final Answer  
 Hart Mariah 8407  
 WS Independence T18  
 JBS Miss Indy 826X  
 JBS Miss G Design 416U

EPDs	CE	BW	WW	YW	MCE	MM	MWW	API	TI
14.9	0.0	63.7	96.9	11.4	21.7	53.5	150.6	76.7	

Dam: 4 calves/100 WWR

Fancy low percentage bull. His dam brings in a top end eye appealing calf every year. Good calving ease.

**58****JBS Mr. Tank2 418C**

BD: 4-20-15 Black, Polled, Purebred Reg. #3029648  
 Act. BW: 100 lbs. Adj. 205 Wt: 832 WW Ratio: 117  
 1/5/16 Wt: 1005 lbs. 88 Day ADG: 3.6 SC: 35

TNT Tanker U263  
 JBS Mr. Tanker 750A  
 JBS Miss Macho798T  
 HC Power Drive 88H  
 JBS Miss P Drive 944P  
 JBS Miss 600U 705

EPDs	CE	BW	WW	YW	MCE	MM	MWW	API	TI
4.5	3.4	75.9	115.8	11.0	27.8	65.7	113.1	71.5	

Dam: 10 calves/110 WWR

Wow, what growth in this young bull. Ranked #6 at weaning. His sire was the pick of our 2014 bulls we retained to use. Most of his calves were younger as we used him for clean up. But we just wanted to show you this one. We will have more in the future.



# Service Sire to all the Bred Heifers

## JBS Mr Brilliance 216B

BD: 2-18-14    Black, Polled, 1/2 Simm    Reg. #2896830  
 Act. BW: 84 lbs.    Birth Ratio: 108    Birth Rank: 15/106  
 Adj. 205 Wt: 706    WW Ratio: 100    Wean Rank: 53/99



SAV Bismarck 5682  
**SAV Brilliance 8077**  
 SAV Blackcap May 5270  
 ER Big Sky 545B  
**JBS Miss Big Sky 915Z**  
 JBS Miss Dream On 749W

We think this bull is the ideal bull for breeding heifers. We call him Brilliant Sky. He is Heterozygous black and homozygous polled.

EPDs	CE	BW	WW	YW	MCE	MM	MWW	API	TI
18.4	-2.5	57.6	89.0	10.7	26.5	55.3	158.1	73.9	

60

## JBS Miss Casino 806B

BD: 3-18-14    Black, Polled, Purebred    Reg. #2896836  
 Act. BW: 87 lbs.    Adj. 205 Wt: 712    WW Ratio: 116

RC Club King 040R  
 JBS Big Casino 336Y  
 JBS Miss Des 301 512N  
 Hooks Shear Force 38K  
 JBS Miss Force 654U  
 JBS Miss LD 008 026S

EPDs	CE	BW	WW	YW	MCE	MM	MWW	API	TI
13.4	0.5	72.4	106.5	14.8	30.1	66.3	132.9	75.5	

Dam: 6 calves/105 WWR

Calf due March 24.



Lot 60

61

## JBS Miss Tanker 826B

BD: 2-26-14    Black, Polled, 3/4 Simm    Reg. #2896711  
 Act. BW: 75 lbs.    Adj. 205 Wt: 624    WW Ratio: 101

Mr NLC Superior S6018  
 TNT Tanker U263  
 TNT Miss S17  
 Bushs Grand Design  
 JBS Miss G Design 416U  
 JBS Miss Mt 919P

EPDs	CE	BW	WW	YW	MCE	MM	MWW	API	TI
10.2	-0.6	62.0	93.7	11.5	27.0	58.0	131.0	71.1	

Dam: 6 calves/102 WWR

Calf due March 19.



Lot 61

**62**

## JBS Miss HF Answer 207B

BD: 3-7-14 Black, Polled, 1/2 Simm Reg. #2896853  
 Act. BW: 76 lbs. Adj. 205 Wt: 643 WW Ratio: 104

SAV Final Answer 0035  
 Hart Final Answer  
 Hart Mariah 8407  
 Welshs Dew It Right 067T  
 JBS Ms Dew It Right 021Z  
 JBS Miss Pace 340X

EPDs	CE	BW	WW	YW	MCE	MM	MWW	API	TI
15.7	-0.2	78.8	116.2	11.0	18.3	57.7	157.9	84.5	

Dam: 2 calves/108 WWR

Bull calf due April 17.

**Lot 62****63**

## JBS Miss HF Answer 211B

BD: 2-27-14 Black, Polled, 1/4 Simm Reg. #2896799  
 Act. BW: 83 lbs. Adj. 205 Wt: 670 WW Ratio: 109

SAV Final Answer 0035  
 Hart Final Answer  
 Hart Mariah 8407  
 SAV Bismarck 5682  
 JBS Miss Bismarck 058Z  
 JBS Miss Indy 521X

EPDs	CE	BW	WW	YW	MCE	MM	MWW	API	TI
15.4	0.3	82.5	125.9	11.5	21.1	62.3	156.7	87.5	

Dam: 2 calves/105 WWR

Calf due March 29.

**64**

## JBS Miss HF Answer 219B

BD: 3-5-14 Black, Polled, 3/8 Simm Reg. #2896791  
 Act. BW: 94 lbs. Adj. 205 Wt: 658 WW Ratio: 107

SAV Final Answer 0035  
 Hart Final Answer  
 Hart Mariah 8407  
 TNT Tanker U263  
 JBS Miss Tanker 937Z  
 JBS Miss Macho 798W

EPDs	CE	BW	WW	YW	MCE	MM	MWW	API	TI
7.6	3.0	86.9	131.3	12.2	21.3	64.7	124.3	81.6	

Dam: 2 calves/104 WWR

Calf due March 14.

**Lot 64****65**

## JBS Miss Octane 122B

BD: 3-27-14 Black, Polled, Purebred Reg. #2896707  
 Act. BW: 96 lbs. Adj. 205 Wt: 662 WW Ratio: 108

Wheatland Predator 922W  
 Wheatland Highoctane 169Y  
 Wheatland Lady 351N  
 Sand Ranch Hand 927Y  
 JBS Miss Ranch Hand 927Y  
 JBS Miss Red Label 318W

EPDs	CE	BW	WW	YW	MCE	MM	MWW	API	TI
6.1	2.7	64.8	94.5	9.3	18.7	51.1	96.7	63.9	

Dam: 3 calves/104 WWR

Heifer calf due April 20.

**66**

## JBS Miss Superstout 013B

BD: 3-25-14 Black, Polled, Purebred Reg. #2896729  
 Act. BW: 92 lbs. Adj. 205 Wt: 635 WW Ratio: 103

SRS Right-On 22R  
 Mr Ishee Superstout 014  
 Ishee MS Lucky Dice 312N  
 ASR/GLS Pacesetter U862  
 JBS Miss Pace 349X  
 JBS Miss Daytona 949N

EPDs	CE	BW	WW	YW	MCE	MM	MWW	API	TI
8.9	2.8	69.1	104.1	9.9	26.2	60.8	117.1	69.2	

Dam: 4 calves/101 WWR

Calf due March 10.

**Lot 66**



## JBS Miss Superstout 127B

BD: 3-17-14 Black, Polled, Purebred Reg. #2896702  
Act. BW: 88 lbs. Adj. 205 Wt: 650 WW Ratio: 106

SRS Right-On 22R  
Mr Ishee Superstout 014  
Ishee MS Lucky Dice 312N  
MRL 128W  
JBS Miss Black Bear 743Y  
JBS Miss LTD 903T

EPDs	CE	BW	WW	YW	MCE	MM	MWW	API	TI
8.0	3.9	68.3	99.6	9.9	27.9	62.0	102.2	66.9	

Dam: 3 calves/103 WWR

Calf due March 7.



## JBS Miss Casino 707B

BD: 3-31-14 Black, Polled, 3/4 Simm Reg. #2896743  
Act. BW: 83 lbs. Adj. 205 Wt: 685 WW Ratio: 111

RC Club King 040R  
JBS Big Casino 336Y  
JBS Miss Des 301 512N  
Bushs Grand Design  
JBS Miss G Design 506T  
JBS Miss Goldmine 301R

EPDs	CE	BW	WW	YW	MCE	MM	MWW	API	TI
12.3	0.4	68.4	97.1	11.4	24.5	58.7	139.9	74.9	

Dam: 5 calves/108 WWR

Bull calf due April 26.



## JBS Ms Dew It Right 209B

BD: 2-18-14 Black, Polled, 5/8 Simm Reg. #2896755  
Act. BW: 91 lbs. Adj. 205 Wt: 652 WW Ratio: 106

HTP SVF In Dew Time  
Welshs Dew It Right 067T  
SVF/NJC Senerita N29  
Hart Final Answer  
JBS Miss HF Answer 035Z  
JBS Miss Olie 11X

EPDs	CE	BW	WW	YW	MCE	MM	MWW	API	TI
14.6	1.5	81.2	114.6	12.1	13.7	54.3	141.5	77.7	

Dam: 2 calves/101 WWR

Bull calf due April 29.



## JBS Miss Mo Better 421B

BD: 3-18-14 Black, Polled, Purebred Reg. #2896762  
Act. BW: 120 lbs. Adj. 205 Wt: 693 WW Ratio: 113

STF Mr Momentum H508  
SVF/NJC Mo Better M217  
NJC SVF Antoinette K205  
BF 0K34 Daytona  
JBS Miss Daytona 639P  
JBS Miss Arapa 639

EPDs	CE	BW	WW	YW	MCE	MM	MWW	API	TI
1.6	4.8	65.0	101.8	4.3	21.6	54.1	94.9	59.2	

Dam: 10 calves/111 WWR

Calf due March 24.



## JBS Ms Casino 006B

BD: 4-21-14 Black, Polled, Purebred Reg. #2896747  
Act. BW: 77 lbs. Adj. 205 Wt: 622 WW Ratio: 101

RC Club King 040R  
JBS Big Casino 336Y  
JBS Miss Des 301 512N  
GW Lucky Man 644N  
JBS Miss Lucky 731X  
JBS Miss Macho 979T

EPDs	CE	BW	WW	YW	MCE	MM	MWW	API	TI
9.4	1.3	69.3	102.5	12.4	25.9	60.6	109.9	73.1	

Dam: 4 calves/103 WWR

Calf due March 19.



## JBS Miss HF Answer 226B

BD: 3-4-14 Black, Polled, 3/8 Simm Reg. #2896723  
Act. BW: 79 lbs. Adj. 205 Wt: 608 WW Ratio: 99

SAV Final Answer 0035  
Hart Final Answer  
Hart Mariah 8407  
ASR/GLS Pacesetter U862  
JBS Miss Pace 842Z  
JBS Miss Bushwacker 218U

EPDs	CE	BW	WW	YW	MCE	MM	MWW	API	TI
13.2	0.5	74.6	117.0	10.2	22.0	59.3	142.4	80.8	

Dam: 2 calves/105 WWR

Bull calf due May 1.





## JBS Miss HF Answer 220B

BD: 3-11-14 Black, Polled, 3/8 Simm Reg. #2896788  
Act. BW: 89 lbs. Adj. 205 Wt: 625 WW Ratio: 102

SAV Final Answer 0035  
Hart Final Answer  
Hart Mariah 8407  
Ellingson Legacy M229  
JBS Miss Olie 943Z  
JBS Miss Magnitude 446W

EPDs	CE	BW	WW	YW	MCE	MM	MWW	API	TI
13.5	1.1	75.2	114.1	8.8	19.0	56.6	139.2	79.4	

Dam: 2 calves/95 WWR

Calf due May 7.



Lot 73



## JBS Ms Long Distance 911B

BD: 3-25-14 Black, Polled, 1/2 Simm Reg. #2896883  
Act. BW: 77 lbs. Adj. 205 Wt: 539 WW Ratio: 88

Mohnen Brushpopper 295  
Mohnen Long Distance 1639  
Baldrige Blackbird M565  
WS Independence T18  
JBS Miss Indy 504W  
JBS Miss Goldmine 307R

EPDs	CE	BW	WW	YW	MCE	MM	MWW	API	TI
21.8	-2.4	52.1	78.4	14.6	26.8	52.9	167.6	69.8	

Dam: 5 calves/91 WWR

Bull calf due March 8.



Lot 76



## JBS Miss Pace 617B

BD: 3-26-14 Black, Polled, 5/8 Simm Reg. #2896827  
Act. BW: 78 lbs. Adj. 205 Wt: 583 WW Ratio: 95

Hooks Pacesetter 8P  
ASR/GLS Pacesetter U862  
GLS S82  
BV&M R D Ambush 472  
JBS Miss Ambush 027S  
JBS Miss TC Stock 622K

EPDs	CE	BW	WW	YW	MCE	MM	MWW	API	TI
13.9	-0.9	45.6	76.7	11.8	26.4	49.2	140.2	65.3	

Dam: 6 calves/98 WWR

Calf due March 29.



## JBS Ms Straight Up 125B

BD: 4-15-14 Black, Polled, Purebred Reg. #2896704  
Act. BW: 85 lbs. Adj. 205 Wt: 645 WW Ratio: 105

Mr NLC Upgrade U8676  
Double J Straightup Y132  
Double J Miss K056  
WS Independence T18  
JBS Miss Indy 715Y  
JBS Miss LD008 337T

EPDs	CE	BW	WW	YW	MCE	MM	MWW	API	TI
11.7	0.9	61.2	86.0	14.8	23.9	54.5	118.5	66.4	

Dam: 2 calves/100 WWR

Calf due March 10.



## JBS Miss Everready 649B

BD: 4-27-14 Black, Polled, Purebred Reg. #2896727  
Act. BW: 87 lbs. Adj. 205 Wt: 633 WW Ratio: 103

TNT Ever Ready R232  
JBS Mr Everready 037Z  
JBS Miss Olie 823X  
JBS Mr. L. Dice 008M  
JBS Miss LD 210S  
JBS Miss Balance 727M

EPDs	CE	BW	WW	YW	MCE	MM	MWW	API	TI
10.3	2.1	63.6	93.1	14.4	20.1	51.9	114.7	65.9	

Dam: 7 calves/100 WWR

Bull calf due April 29.

Benda Ranch 2016 Ultrasound												
	Adj Wt.	Marbling		Backfat		Rib Eye		Carcass EPDs				
Tattoo	SW Adj	IMF Adj	IMF_Rat	BF Adj	BF_Rat	REA Adj	REA_Rat	CW EPD	YG EPD	MB EPD	BF EPD	REA EPD
001C	1158	2.96	83	0.15	65	14.03	96	20.4	-0.45	0.07	-0.088	0.83
007C	1234	4.19	118	0.33	143	14.01	96	27.1	0	0.62	0.032	0.47
010C	1248	3.86	109	0.47	204	15.53	106	35.1	-0.16	0.25	0.033	1.06
011C	1377	2.92	82	0.22	96	16.6	114	51.8	-0.29	0.09	-0.058	0.96
012C	1363	3.58	101	0.18	78	14.55	100	46.1	-0.34	0.19	-0.057	1.07
013C	1217	3.15	89	0.24	104	13.43	92	24.6	-0.32	-0.03	-0.033	0.92
021C	1397	4.02	113	0.26	113	16.11	110	47.8	-0.2	0.5	0	1.1
036C	1416	3.2	100	0.2	100	15.18	106	38.8	-0.41	-0.18	-0.077	1.04
037C	1327	2.9	82	0.21	91	15.01	103	36.6	-0.12	0.38	-0.017	0.55
054C	1343	3.49	98	0.18	78	14.4	99	35.4	-0.3	0.14	-0.073	0.67
057C	1356	2.81	79	0.24	104	14.77	101	40.2	-0.27	-0.03	-0.031	0.96
060C	1308	3.02	85	0.18	78	14.93	102	26.9	-0.4	-0.01	-0.067	0.94
104C	1480	2.34	73	0.21	105	15	104	38.8	-0.4	-0.36	-0.074	1.02
112C	1360	3.55	100	0.16	70	14.08	96	27.6	-0.38	0.22	-0.08	0.78
114C	1343	3.27	92	0.17	74	16.4	112	35	-0.45	0.24	-0.072	1.13
115C	1298	2.39	67	0.29	126	15.72	108	41.5	-0.23	-0.04	-0.026	0.92
118C	1294	3.82	108	0.2	87	15.64	107	33.9	-0.42	0.23	-0.084	0.95
119C	1273	3.87	109	0.16	70	15.82	108	25.4	-0.45	0.22	-0.069	1.04
204C	1385	4.24	119	0.32	139	15.9	109	38.1	-0.23	0.68	-0.004	1.02
213C	1231	3.12	88	0.15	65	14.75	101	34.2	-0.29	0.15	-0.046	0.84
221C	1416	3.65	103	0.26	113	15.16	104	34.3	-0.21	0.44	-0.007	0.88
226C	1386	4.05	114	0.33	143	14.39	99	46.3	-0.14	0.45	0.036	1.17
235C	1386	4.24	119	0.25	109	13.64	93	28	-0.24	0.57	-0.007	0.93
236C	1149	3.25	92	0.19	83	13.45	92	19.6	-0.18	0.35	-0.021	0.5
307C	1249	3.01	85	0.3	130	14.72	101	20.6	-0.17	0.27	0.011	0.76
310C	1260	2.72	77	0.24	104	14.03	96	42.4	-0.21	0.12	-0.002	1.05
313C	1296	3.68	104	0.31	135	12.65	87	37.3	0	0.43	0.014	0.45
316C	1381	4.18	118	0.24	104	15.38	105	40.5	-0.32	0.35	-0.011	1.28
320C	1285	4.22	119	0.26	113	13.83	95	18.8	-0.31	0.3	-0.03	0.85
321C	1282	2.72	77	0.19	83	17.85	122	20.8	-0.5	0.08	-0.056	1.25
323C	1316	4.8	135	0.27	117	13.05	89	34.9	-0.16	0.88	-0.022	0.64
325C	1167	2.62	74	0.16	70	13.45	92	11.7	-0.37	0.02	-0.051	0.78
326C	1265	3.7	104	0.18	78	12.16	83	25.4	-0.26	0.42	-0.047	0.63
327C	1138	2.84	80	0.15	65	12.78	88	14.4	-0.35	0.08	-0.074	0.58
331C	1296	3.35	94	0.16	70	16.3	112	25.9	-0.49	0.31	-0.059	1.25
334C	1237	3.12	88	0.18	78	15.24	104	27.4	-0.35	0.06	-0.068	0.77
412C	1204	3.8	107	0.19	83	13.41	92	22	-0.38	0.12	-0.074	0.74
418C	1338	3.81		0.28		14.05		41.9	-0.33	0.06	-0.059	0.95
48C	1435	3.46	97	0.23	100	15.31	105	32.2	-0.09	0.43	0.011	0.64
601C	1353	3.84	108	0.17	74	14.6	100	50.5	-0.32	0.47	-0.068	0.95
617C	1325	3.93	111	0.2	87	15.23	104	33.5	-0.37	0.37	-0.064	0.93
640C	1199	4.14	117	0.19	83	13.13	90	34.9	-0.3	0.4	-0.066	0.73
718C	1276	4.29	121	0.34	148	12.48	85	30.2	-0.15	0.51	-0.008	0.67
801C	1425	6.2	175	0.41	178	14.81	101	40.9	-0.17	0.71	-0.002	0.9
802C	1382	3.76	106	0.32	139	13.75	94	43.4	0.1	0.38	0.031	0.36
819C	1268	3.45	97	0.27	117	13.13	90	38.1	-0.18	0.36	-0.025	0.72
821C	1342	2.97	84	0.18	78	14.01	96	46.1	-0.3	-0.05	-0.067	0.87
828C	1376	3.36	95	0.38	165	15.35	105	33.9	-0.17	0.05	0.013	0.92
836C	1278	3.69	104	0.2	87	15.43	106	43.7	-0.21	0.32	-0.052	0.66
904C	1349	2.73	77	0.2	87	15.28	105	42.3	-0.31	-0.07	-0.063	0.87
909C	1162	3.28	100	0.15	100	14.9	100	34.1	-0.35	0.05	-0.044	1.05
913C	1346	3.76	106	0.18	78	15.57	107	37	-0.05	0.48	0.002	0.51
920C	1130	3.65	100	0.22	100	13.8	100	34.1	-0.35	0.05	-0.044	1.05
926C	1333	3.47	98	0.24	104	14.03	96	38.6	-0.36	0.03	-0.068	0.95
928C	1136	3.55	111	0.16	80	12.45	87	18.3	-0.31	0.06	-0.084	0.41
931C	1327	3.36	95	0.23	100	14.45	99	34.3	-0.37	0.13	-0.055	1.03
938C	1201	3.66	115	0.21	105	14.9	104	18.3	-0.36	0.08	-0.068	0.68
950C	1295	3.4	96	0.22	96	15	103	49.4	-0.25	0.44	-0.051	0.87

# **Benda Ranch Simm-Angus & Simmentals**

**Jim Benda  
26106 366th Ave.  
Kimball, SD 57355**



**Monday, February 8, 2016 • 1 p.m.  
Kimball Livestock Exchange • Kimball, SD**

**Please bring this catalog to the SALE.**